

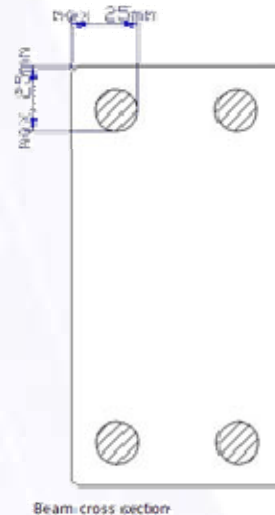
# KLP® S (Reinforced Beams)

## Durable and environmentally friendly

KLP®-S is maintenance free, durable and does not splinter or rot, but the main advantages of using KLP®-S is its stiffness. At the present time, this material can be used to span lengths of up to 5 metres. KLP®-S is also ultra environmentally friendly, which means no leaching into surface water or groundwater! KLP®-S beams are made from recycled plastic and reinforced with steel (see cross-section diagram).

### Reasons to use KLP-S:

- Maintenance free
- Durable (lifespan of more than 40 years!)
- Does not rot or splinter
- No leaching

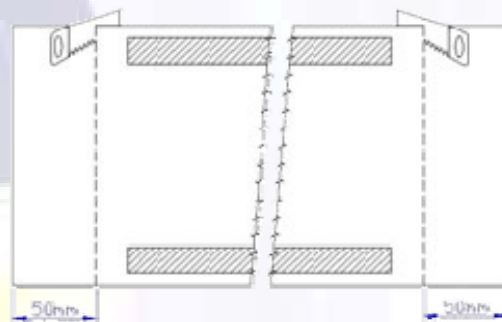


Lankhorst's steel-reinforced products help reduce costs because fewer uprights are needed for support (greater span width) and the labour costs for the construction and fitting work are lower. The fact that this system is maintenance free obviously also helps reduce costs even further.

### Specifications

- **KLP®-S**
  - Dimension : 15 x 7 cm
  - Length : 250 cm
  - Standard colour : black
- **KLP®-S**
  - Dimension : 8 x 8 cm
  - Length : 300 cm
  - Standard colour : black
- **KLP®-S**
  - Dimension : 16 x 8
  - Length : 400
  - Standard colour : black
- **KLP®-S**
  - Dimension : 18 x 8
  - Length : 500
  - Standard colour : black

\* Steel with 8, 12 or 16 mm per beam is used depending on the application



## Bollards2u

Unit 8  
Northfield Farm Industrial Estate  
Wantage Road  
Great Shefford  
Hungerford  
Berkshire  
RG17 7BY

Tel: 01488 64 98 98

Fax: 01488 64 90 31

E-Mail: [info@bollards2u.co.uk](mailto:info@bollards2u.co.uk)

Web: <http://www.bollards2u.co.uk/>

| KLP®-S Beam         | Load        |
|---------------------|-------------|
| 15 x 7 x 250 - S    | 8 3,0 kN/m  |
| 15 x 7 x 250 - S    | 12 6,5 kN/m |
| 8 x 8 x 300 - S8    | 0,4 kN/m    |
| 16 x 8 x 400 - S 8  | 1,0 kN/m    |
| 16 x 8 x 400 - S 12 | 2,0 kN/m    |
| 16 x 8 x 400 - S 16 | 3,4 kN/m    |
| 18 x 8 x 500 - S 8  | 0,7 kN/m    |
| 18 x 8 x 500 - S 12 | 1,5 kN/m    |
| 18 x 8 x 500 - S 16 | 2,5 kN/m    |

### Load bearing capacity KLP®-S beams\*

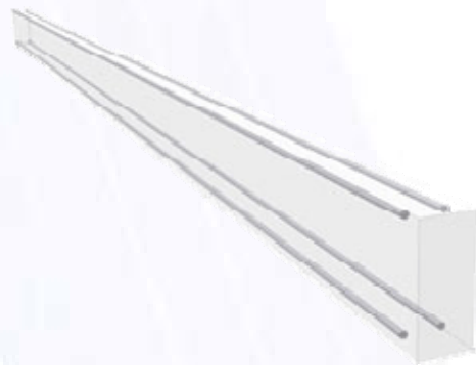
(indicative) according to NEN standard 6702 (free span width = 90% of the length of the beam)

### Recycled Plastics are *the* environmentally friendly solution!

Increasing concerns about the environment, especially the controversial use of tropical hardwoods and chemical treatments, has sparked a search for alternatives for waterside construction projects.

Recycled plastic is *the* environmentally friendly solution!

In the construction of, for example, jetties and bridges, girders have to be stiffer and longer to cover increasingly greater span widths between supports. Lankhorst has solved this problem by combining plastic with steel.



## Bollards2u

Unit 8  
Northfield Farm Industrial Estate  
Wantage Road  
Great Shefford  
Hungerford  
Berkshire  
RG17 7BY

Tel: 01488 64 98 98

Fax: 01488 64 90 31

E-Mail: [info@bollards2u.co.uk](mailto:info@bollards2u.co.uk)

Web: <http://www.bollards2u.co.uk/>